

Horizon Market View

Fed interest rate cut expected

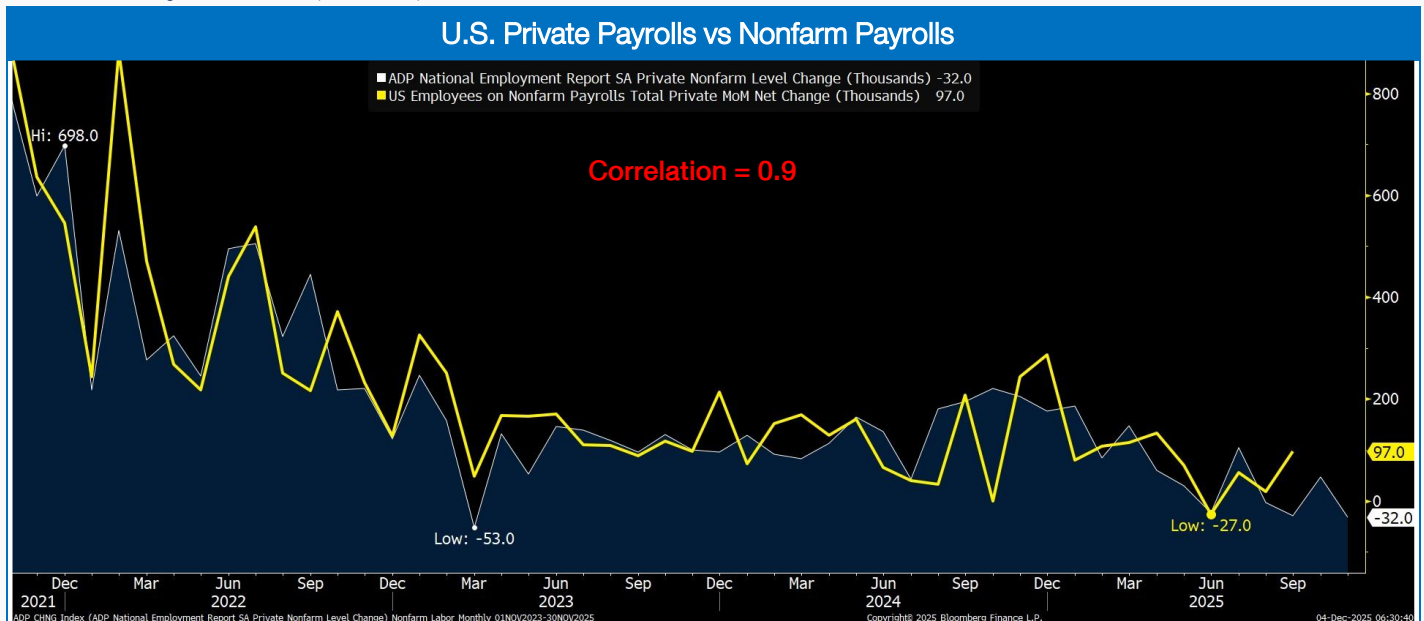
Yesterday, U.S. stock markets rose 0.2-1.9%. Fed is expected to cut the interest rate as U.S. labor market weakened. Private payrolls (ADP) in November fell 32,000 (versus 10,000 rise expected), so markets are concerned that nonfarm payrolls (reported Dec 16) will fall as well; these two figures have correlation coefficient of 0.9.

Watch other U.S. economic figures:

- Reported tonight at 20:30, initial jobless claims are expected at 220,000, up from 216,000.
- Reported on December 5 at 22:00, U.S. personal consumption expenditure (PCE) price index in September is expected to rise 2.8%yoy, up from 2.7%yoy in August.

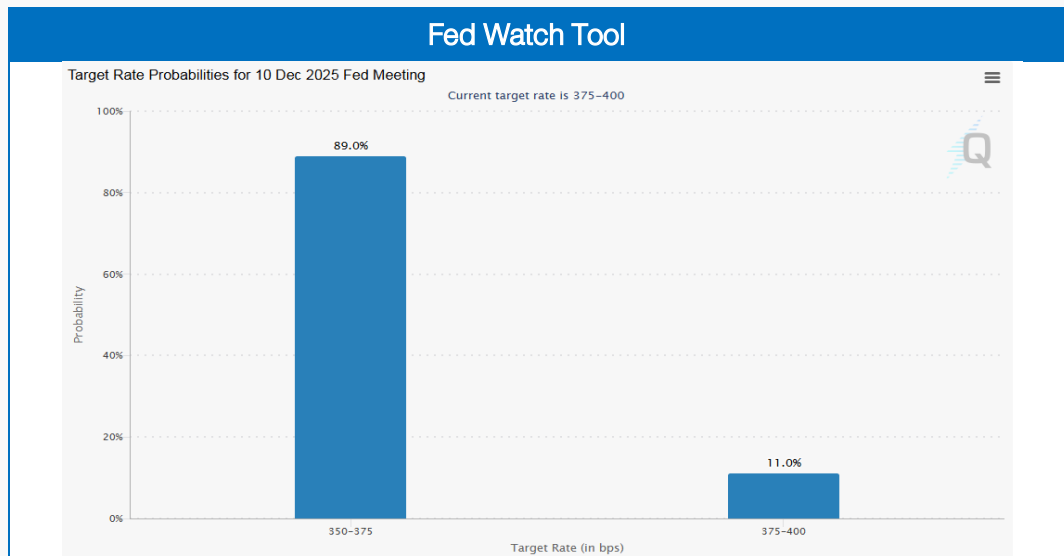
U.S. Private Employment									
United States		Browse		06:30:42		12/03/25		12/11/25	
Economic Releases		All Economic Releases		View		Agenda		Weekly	
Date	Time	A	M	R	Event	Period	Surv(M)	Actual	Prior Revised
12/03	20:15				ADP Employment Change	Nov	10k	-32k	42k 47k

Source: Bloomberg, ASPS Research (Dec 3, 2025)

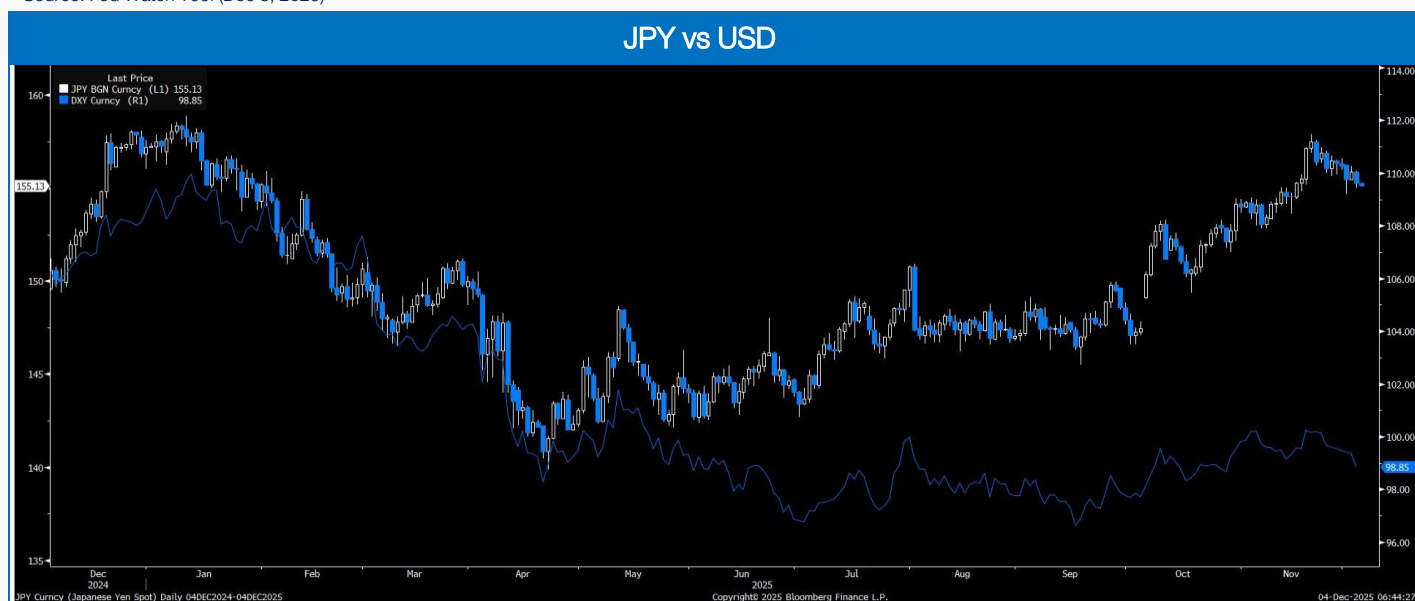


Source: Bloomberg, ASPS Research (Dec 3, 2025)

Markets expect Fed interest rate cut while they are concerned about Yen carry trade since Fed and the Bank of Japan (BOJ) have opposite monetary policy directions. Fed is anticipated to cut the interest rate by 25bp (almost 90% chance) on December 10. In contrast, the BOJ is expected to hike the interest rate by 25bp (80% 90% chance). USD weakened, while JPY strengthened against USD 0.6%mtl.



Source: Fed Watch Tool (Dec 3, 2025)



Source: Bloomberg, ASPS Research (Dec 3, 2025)

Region Radar

DRAM chip price rises in Nov

Dynamic random-access memory (DRAM) chips were originally used in mobile phones, PCs, and laptops. Currently, DRAM is more used in AI and data center businesses. DRAM price jumped 471%yoy in November. DRAM spot price jumped, driven by rising demand in data center business. Moreover, South Korea's DRAM export in October increased 57%yoy.

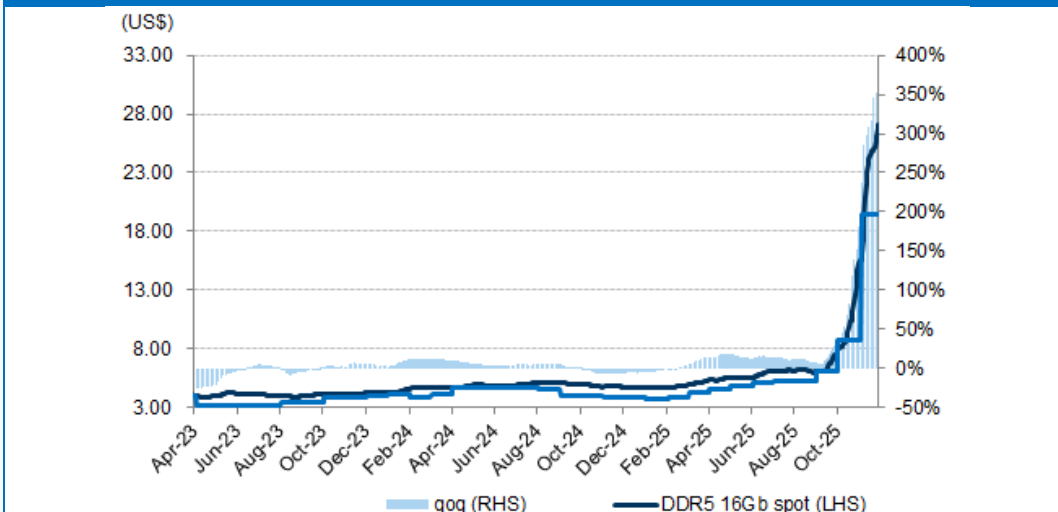
Speculate on SK Hynix (000660.KS) and Micron Technology (MU.US). SK Hynix dominates the largest DRAM market share and makes more than 70% of total revenue from DRAM sales. SK Hynix's valuation is inexpensive with 2025 forward P/E ratio of 7x. Micron's 2025 profit growth will be driven by higher demand and rising DRAM price.

DRAM Chip Price Trend

Indicators	Period	Sequential change	yoy change	Direction	Previous
DRAM spot pricing trend (daily)	11/28/2025	0%	471%	↑↑↑	↑↑↑
Server ODM monthly revenue trend (monthly)	October	-6%	52%	↑↑↑	↑↑↑
Aspeed monthly revenue trend (monthly)	October	-10%	7%	↑	↑
Korea monthly DRAM export revenue (monthly)	October	-5%	57%	↑↑↑	↑↑
China smartphone shipment (monthly)	September	18%	8%	↑	
Nanya monthly revenue trend (monthly)	October	19%	262%	↑↑↑	↑↑↑
Supreme monthly revenue trend (monthly)	October	-11%	10%	↑	↓
Second derivative of industry DRAM ASP (quarterly)	4Q25E	9%		↑↑	↓
2026 HBM consensus	2026			↑	↓
GS view based on channel checks and feedback				↑↑↑	↑↑
Overall				↑↑	↑

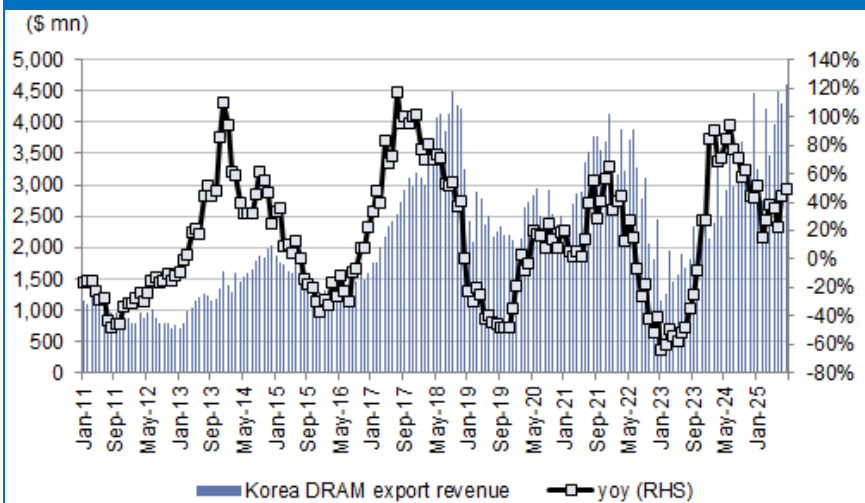
Source: Goldman Sachs, ASPS Research (Dec 3, 2025)

DRAM Chip Spot Price



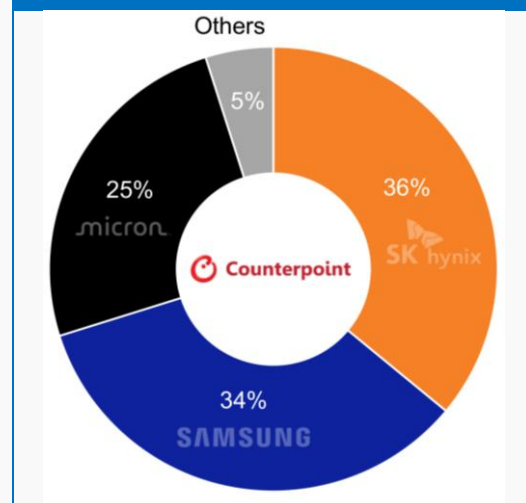
Source: Goldman Sachs, ASPS Research (Dec 3, 2025)

South Korea's DRAM Ship Export



Source: Goldman Sachs, ASPS Research (Dec 3, 2025)

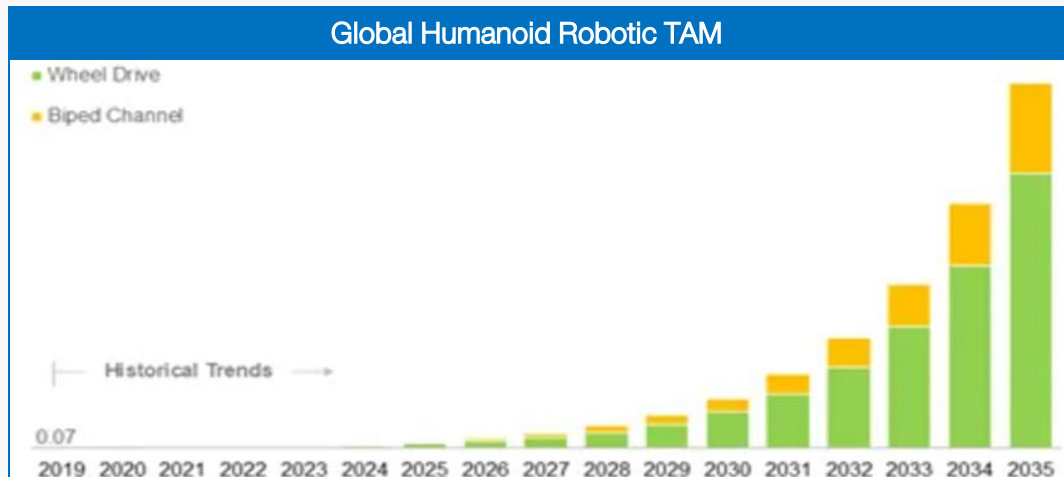
DRAM Market Share



Source: Counterpoint Research, ASPS Research (Dec 3, 2025)

U.S. government to support robotics

Tesla (TSLA.US) jumped 4.08% following reports that the government will strongly support the robotics sector in 2026. Commerce Secretary Howard Lutnick, having met robotics industry CEOs, said the Trump administration is going all-in on accelerating the robotics sector's growth and considers issuing an executive order supporting the robotics sector in 2026.



Source: Yahoo Finance, ASPS Research (Dec 3, 2025)

Thai Focus



Thai CPI drops eight months straight

Reported by the Ministry of Commerce yesterday, Thailand's consumer price index (CPI) in November dropped for the eighth consecutive month by 0.49%yoy (versus 0.6% drop expected), mainly a drop in energy prices (electricity, oil) in line with global market prices and the government's living cost reduction policies. Still, core CPI rose 0.66%yoy (higher than 0.6% expected), up from 0.61% in October.

The Commerce Ministry expects Thailand's CPI to drop to drop 0.48-1.08% in December and thus drop 0.15-0.2% in 2025 as a result of drop in global crude oil price and electricity cost reduction measures. Then, 2026 inflation is expected around 0.0-1.0%. Thailand's 2026 GDP is expected to grow only 1.7%. Also, THB appreciation will boost import at lower cost.

Thailand's Inflation									
Thailand		Browse		10:04:22		12/03/25		12/	
Economic Releases		All Economic Releases				View		Agenda	
Date	Time	A	M	R	Event	Period	Surv(M)	Actual	Prior
21)	12/03 10:00				CPI YoY	Nov	-0.60%	-0.49%	-0.76%
22)	12/03 10:00				CPI NSA MoM	Nov	0.00%	0.15%	-0.11%
23)	12/03 10:00				CPI Core YoY	Nov	0.60%	0.66%	0.61%

Source: Bloomberg, ASPS Research (Dec 3, 2025)



Source: TPSO, ASPS Research (Dec 3, 2025)

Considering Thailand's continuous low inflation, unexpected floods in Hat Yai, and rapid THB appreciation, the interest rate is projected to be cut in late-2025 or early-2026. A 0.25% (25bp) interest rate cut is expected to raise SET Index target by 57 pts or raise P/E ratio by 0.67x.

We recommend stocks with high yields (AP, SPALI, ADVANC, ICHI, PTTEP). If the interest rate is cut, we also favor leasing plays (MTC, TIDLOR, SAWAD).

Synapse Strategy

SET Index more promising, more good news

SET Index is now more promising. The flood situation in Songkhla improves. Concern about parliament dissolution subsides. Inflation has dropped eight months straight, so interest rate cut is expected. Foreigners were net buyers for three days straight totaling B2.2bn.

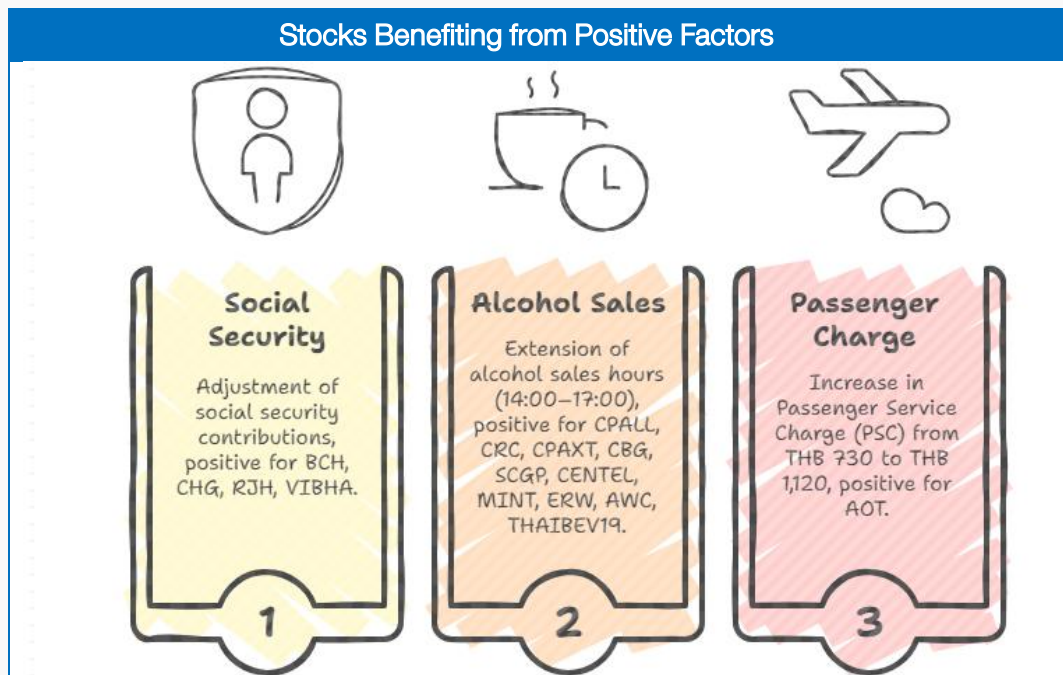
MTD Trading Value by Investor Type															
	Local Institutes					Proprietary Trading					Foreign Investors				
	Value					Value					Value				
	Buy		Sell			Buy		Sell			Buy		Sell		
Total	10,932.22					6,770.81					60,715.92				
%Total	10.30					6.43					57.67				
Net	-495.87					1,408.07					2,202.84				

Date	Local Institutes					Proprietary Trading					Foreign Investors				
	Value					Value					Value				
	Buy	%	Sell	%	Net	Buy	%	Sell	%	Net	Buy	%	Sell	%	Net
03/12/2025	4,681.26	12.89	4,456.96	12.27	224.30	1,857.77	5.11	1,685.93	4.64	171.83	19,901.13	54.79	19,672.43	54.16	228.70
02/12/2025	3,212.78	9.87	3,747.65	11.52	-534.88	1,750.58	5.38	1,738.52	5.34	12.06	18,849.48	57.93	18,114.48	55.67	735.00
01/12/2025	3,038.19	8.34	3,223.49	8.85	-185.30	3,162.46	8.68	1,938.28	5.32	1,224.18	21,965.32	60.31	20,726.17	56.90	1,239.14

Source: SET, ASPS Research (Dec 3, 2025)

Also, there are many positive factors benefiting service sectors:

- Social security contributions were raised from B750 to B875 in 2026-2028, B1,000 in 2029-2031, and B1,150 from 2032 on: BCH, CHG, RJH, VIBHA.
- Alcohol drink sale is allowed at 14:00-17:00, and restaurant customers can continue drinking for one more hour until 1:00: CPALL, CRC, CPAXT, CBG, SCGP, CENTEL, MINT, ERW, AWC.
- Passenger service charge (PSC) is hiked first time in 19 years from B730 to B1,120: AOT.



Source: ASPS Research (Dec 4, 2025)

We expect the following stocks to be included in SET50 and SET100 in 1H26; last year, the SET announced 1H25 SET50 and SET100 lists on December 18, 2024:

Potential 1H26 SET50-SET100 Inclusion/Exclusion Stocks						
SET50						
Entry	Avg. Market Cap (3 Month)	Prop.		Exit	Avg. Market Cap (3 Month)	Prop.
ITC	48,685,714,286	>95%		VGI	30,735,887,702	>95%
SAWAD	47,633,821,029	>90%		BCP	41,154,703,248	>90%
SET100						
Entry	Avg. Market Cap (3 Month)	Prop.		Exit	Avg. Market Cap (3 Month)	Prop.
PTG	13,747,015,873	>90%		MBK	34,092,932,551	>90%
GFPT	12,590,950,090	>90%		WHAUP	15,789,357,143	>90%
STECON	11,848,825,505	>60%		SISB	11,815,650,794	>60%

Source: SET, ASPS Research

Projection on SET50 and SET100 Inclusions and Exclusions for 1H26

- MBK -> SET100 exclusion, Turnover meet criteria for 8 out of 12 months
 - WHAUP -> SET100 exclusion, Trading value below 25% of market average, meeting criteria for 6 out of 12 months
 - STECON and SISB have similar average market cap, STECON inclusion less likely
- SET announced 1H25 SET50-SET100 list on Dec 18, 2024

We recommend speculating on stocks benefiting from higher social security contributions (BCH, CHG), alcohol ban lift (CPAXT, CPALL, SCGP, ERW, THAIBEV19), and PSC hike (AOT), and stocks that may be included in SET50 (ITC, SAWAD) or SET100 (PTG, GFPT, STECON) in 1H26.

December 2025				
Monday	Tuesday	Wednesday	Thursday	Friday
1 Co's name & symbol change JCK Hospitality (JCKH) > Quantum D C (QDC) XD BONDAS19 @tba FPTVN11 @tba FPTVN19 @tba NIKE80 @tba KOB0 @tba SFBOND80	2 XD GSUS06 @tba LHHOTEL @B0.31 LHRREIT @B0.07 LVMH01 @tba New share trading TPL 230,000,000 shrs (pp) XBIO 749,991,072 shrs (kr)	3 New list 0 Warrant DEMCO-W8 183.072m units, B1 par XD CRC @B0.7 FPT @B0.32 ICBC06 @tba ICBC19 @tba JULF @B0.18 NETEASE90 @tba NVD01 @tba NVD03 @tba NVD06 @tba NVD19 @tba NVD80 @tba XN CTARAF @B0.133 New share trading ECF111,948,708 shrs (w) Conversion CHAYO-W3 1.027:1w @B8.759 (final)	4	5 PUBLIC HOLIDAY (H.M. King Bhumibol Adulyadej The Great's Birthday / National Day / Father's Day)
8 XD BAC03 @tba BDX06 @Tba BKNG303 @tba BKNG380 @tba GOOGL03 @tba GOOG01 @tba GOOG90 @tba NDAQ06 @tba SIA19 @tba TFFIF @B0.1140 TIDLOR @B0.34 UNH19 @tba Conversion JSP-W2 1:1w @B4.00 (final)	9 Dellist JSP-W2 Par decrease QHBREIT B8.8047 par (from B8.8847) XD GVREIT @B0.1825 HPF @B0.133 M-STOR @B0.110 MII @B0.1623 MNIT @B0.0330 MNIT2 @B0.0900 MNRF @B0.0300 XR MVP 1:1.50n @B0.45 XW MVP 2n :1MVP-W2	10 Last trading day TFI-W1 XD ABFTH @B20.00 ACT @B0.81 LENOVO13 @tba PUBLIC HOLIDAY (Constitution Day)	11 XB TEGH 100:1 (Pre-emptive) XE TFI-W1 1:1w @B0.15 (final, "SP")	12
15 XD DISNEY19 @tba LHSC @B0.220 XN QHBREIT @B0.1950 Conversion PACO-W1 1:1w @B3.00 (final) Last trading day RS-W5 XD QQQM19 @tba SPFIN80 @tba SPCOM80 @tba SPENGY80 @tba SPHLTH80 @tba SPTECH80 @tba XE B52-W4 1:1w @B0.50 (final, "SP")	16 Dellist PACO-W1 XD TAIWAN13 @tba TAIWANH013 @tba	17 Last trading day SCN-W2 XD SFBOND80 @tba	18 Last trading day B52-W4 XE SCN-W2 1:1w @B5.00 (Final, "SP")	19
22 Last trading day RS-W5 XD QQQM19 @tba SPFIN80 @tba SPCOM80 @tba SPENGY80 @tba SPHLTH80 @tba SPTECH80 @tba XE B52-W4 1:1w @B0.50 (final, "SP")	23 XE RS-W5 2:1w @B3.00 (final, "SP")	24	25 XD SP500US19 @tba SP500US80 @tba	26
29 XW ACC 5 existing : 1ACC-W3	30 PUBLIC HOLIDAY (New Year's Eve)	31		

January 2026				
Monday	Tuesday	Wednesday	Thursday	Friday
			1 PUBLIC HOLIDAY (New Year's)	2 SPECIAL HOLIDAY (New Year's)
5 Conversion TFI-W1 1:1w @B0.15 (final)	6 Dellist TFI-W1 XW KASET 2.50 existing : 1KASET-W1	7	8 XW SAAM 2 existing : 1SAAM-W3 SAAM 2 existing : 1SAAM-W4	9
12 Conversion SCN-W2 1:1w @B5.00 (Final)	13 Dellist SCN-W2 Conversion B52-W4 1:1w @B0.50 (final)	14 Dellist B52-W4 Conversion RS-W5 2:1w @B3.00 (final)	15 Dellist RS-W5 XD ABBV19 @tba	16
19 XW NCL 3 existing: 1NCL-W4 Conversion SFLEX-W2 1:1w @B10.00 (final)	20 Dellist SFLEX-W2	21	22	23
26	27	28	29 XD TSC @B0.80	30

ที่มา: set.or.th

หมายเหตุ : "@tba" หุ้น DR ที่มีการประกาศปันผลยังเป็นตัวเลขปันผลเบื้องต้น ยังมีการเปลี่ยนแปลงได้

Certified : This level indicates practical participation with thoroughly examination in relation to the recommended procedures from the audit committee or the SEC's certified auditor, being a certified member of Thailand's Private Sector Collective Action Coalition Against Corruption programme (Thai CAC) or already passed examination to ensure independence from external parties.

Declared : This level indicates determination to participate in the Thailand's Private Sector Collective Action Coalition Against Corruption programme (Thai CAC)

"Disclaimer: The disclosure of the survey result of the Thai Institute of Directors Association (IOD) regarding corporate governance is made pursuant to the policy of the Office of the Securities and Exchange Commission. The IOD survey is based on the information of a company listed on the Stock Exchange of Thailand and the Market for Alternative Investment disclosed to the public and able to be accessed by a general public investor. The result, therefore, is from the perspective of a third party. It is not an evaluation of operation and is not based on inside information

The survey result is as of the date appearing in the Corporate Governance Report of Thai Listed Companies. As a result, the survey result may be changed after that date. Asia Plus Securities Public Company Limited neither confirms nor certifies the accuracy of such survey results.

"Disclaimer: The disclosure of the Anti-Corruption Progress Indicators of a listed company on the Stock Exchange of Thailand, which is assessed by the relevant institution as disclosed by the Office of the Securities and Exchange Commission, is made in order to comply with the policy and sustainable development plan for the listed companies. The relevant institution made this assessment based on the information received from the listed company, as stipulated in the form for the assessment of Anti-corruption which refers to the Annual Registration Statement (Form 56-1), Annual Report (Form 56-2), or other relevant documents or reports of such listed company. The assessment result is therefore made from the perspective of a third party. It is not an assessment of operation and is not based on any inside information. Since this assessment is only the assessment result as of the date appearing in the assessment result, it may be changed after that date or when there is any change to the relevant information. Nevertheless, Asia Plus Securities Public Company Limited neither confirms, verifies, nor certifies the accuracy and completeness of the assessment result."